



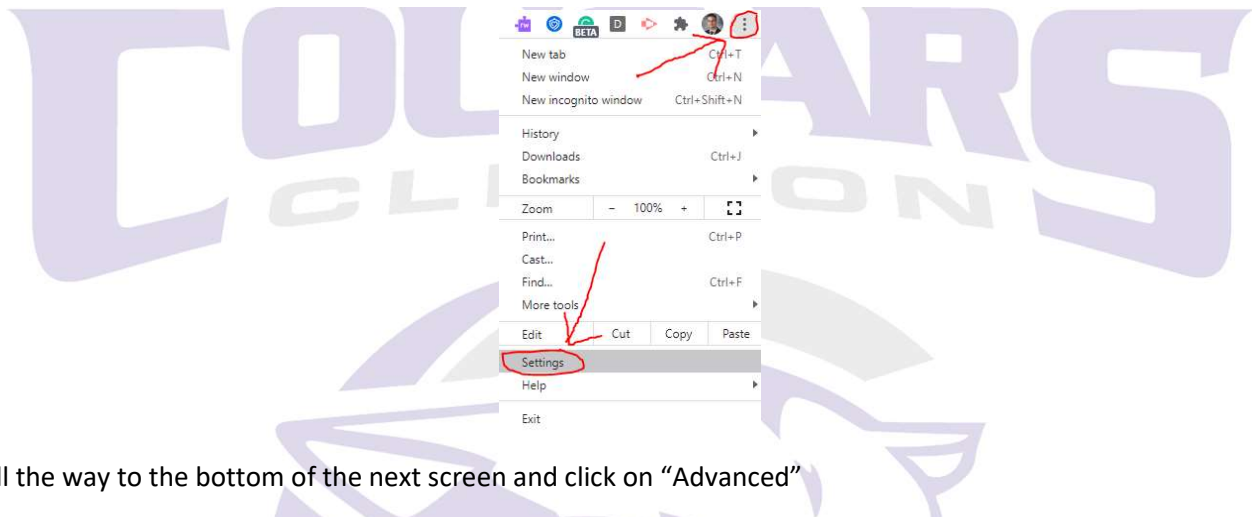
Clinton Community School District

112 Milwaukee Rd. Clinton WI 53525
608-676-0998 | 608-676-4444

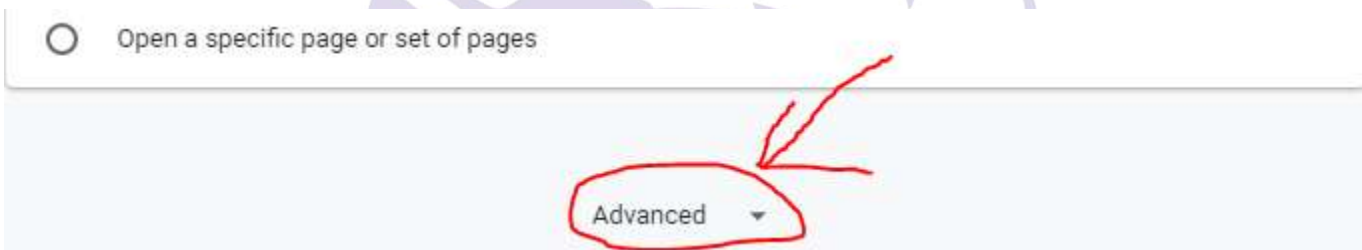
Dr. Jim Brewer
District Administrator
Sarah Duncan
Business Manager
Bryan Erskine
Director of Technology

How to Reset Settings to Factory Default

Simply Click the three dots in the upper right hand corner of the Browser and scroll down and select Settings.



Scroll all the way to the bottom of the next screen and click on "Advanced"



Scroll all the way to the bottom of the next screen after you have clicked on "Advanced"

At the bottom Click on "Restore Settings to their Original Defaults".

This will Restore the students settings to factory default and eliminate any potential issues caused by changing their settings.

